

CARPET BUYING GUIDE

FREE TAKE ONE
ESPAÑOL AL REVERSO

Paper content is
80% recycled fiber.

**LOOK INSIDE FOR GREAT
VALUES, EXCLUSIVE
CHOICES, THE BEST
WARRANTIES AND MORE**

| | | |
|------------------------------------|--|-----|
| GETTING STARTED | | 4-7 |
| CONSIDERING CARPET | | 4-5 |
| QUICK QUESTIONS TO GET YOU STARTED | | 6-7 |

| | | |
|------------------------------|--|-------|
| SELECTING THE RIGHT CARPET | | 8-15 |
| CARPET FIBERS AND TYPES | | 8-9 |
| WHICH COLLECTION TO CHOOSE | | 10-13 |
| UNDERSTANDING OUR WARRANTIES | | 14-15 |

| | | |
|---------------------------------------|--|-------|
| MORE RESOURCES | | 16-20 |
| QUICK INSTALLATION SOLUTIONS | | 16 |
| INSTALLATION BACKED BY THE HOME DEPOT | | 17 |
| CHOOSE THE RIGHT PAD | | 18-19 |
| FINANCING: PROJECT LOAN | | 20 |

| | | |
|----------------------------|--|-------|
| WORKSHEETS / WARRANTIES | | 21-24 |
| PROJECT ESTIMATE WORKSHEET | | 21 |
| INSTALLATION CHECKLIST | | 22 |
| WARRANTY DETAILS | | 23-24 |

Associate name: _____

Store location: _____

Store #: _____

Email: _____

Phone #: _____

**SHOP
ANY TIME,
ANYWHERE**



ONLINE

MOBILE

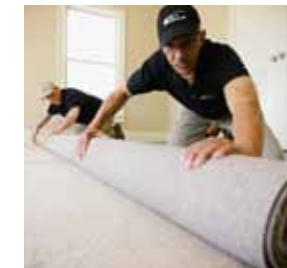
IN STORE

**BETTER
CARPET.
BETTER
PRICE.**

**WHY
CHOOSE
THE HOME
DEPOT?**

ADVANTAGE: HOME DEPOT

- Better Carpet. Better Price.
- Lifetime Stain Warranty backed by The Home Depot*
- Exclusive Brands—Platinum Plus®, Martha Stewart Living™, Soft Collection and TrafficMaster™
- Special Financing Available—see a Store Associate for details
- 72 Hour Installation Available—see page 16



WHOLE-HOME CARPET INSTALLATION[◇]

Any Home, Any Size, Any Carpet—plus our 90-Day Full Satisfaction Guarantee** is included

**GET IT
INSTALLED[◇]**

- Includes basic installation of carpet and pad by licensed professionals
- Installers You Can Trust—fully certified, bonded, screened and backed by The Home Depot
- Lifetime Installation Warranty**—The Home Depot warrants the workmanship of the carpet installation for the lifetime of the carpet
- Customer Satisfaction—9 out of 10 customers surveyed are “Completely Satisfied”**

♦♦, ¥, ¥¥, ◇See pages 23–24 for guarantee, warranty and installation details.

**Based on overall VOC survey.

GET STARTED TODAY

Call 1-800-homedepot, visit your local store, text “install” to hdepot or go to homedepot.com/install for more information

More saving. More doing.™



CONSIDERING CARPET

Before you begin the carpet-buying process, it's important to make sure the retailer you select is knowledgeable on the key components of the project. That's why The Home Depot is committed to educating you on the carpet-buying process.



SHOP
ANY TIME,
ANYWHERE



ONLINE



MOBILE



IN STORE

WEIGHT

Ounce weight is the single largest factor in the cost of carpet. Carpet weight impacts its thickness and softness. Many of our competitors attempt to hide the ounce weights of their carpets so you're unaware of how much—or how little—carpet you're getting. When you shop at The Home Depot, we always show you the ounce weights of our carpet, so you can be sure to get the thickest, softest carpet for your money.

FIBER TYPE

Nylon and polyester look and feel more alike all the time. Nylon is more durable and it's priced accordingly. Make sure you understand the pricing and warranty variations associated with both fiber types.

CARPET PAD

The type of carpet pad you select can have a major impact on the comfort of the carpet. It can also have a dramatic effect on the price of your project. A better pad will result in a more comfortable, durable carpet in your home. Don't overlook the importance of choosing the right carpet pad.

WARRANTY COVERAGE

Simply put, no one can match The Home Depot's comprehensive warranty coverage. We make it easy to enjoy peace of mind for years to come.

Lifetime Stain Warranties* available
Wear Warranties up to 25 years*
Lifetime Installation Warranty**

*, ** See pages 23 – 24 for warranty and installation details.

BETTER CARPET. BETTER PRICE.

Don't just look for the lowest price on carpet, pad or installation—look for the lowest price on everything. When you compare our total project price, carpet quality and warranties, no one can match The Home Depot.

FINANCING OPTIONS

The Home Depot offers a wide range of financing options. Other carpet retailers may offer only one choice—some don't offer any financing at all. See a store Associate or go to homedepot.com/credit to learn more about our financing.

CONFIDENCE

You can count on The Home Depot to be here for years to come. If you have questions or concerns about your carpet down the road, all you have to do is visit your local The Home Depot or go to homedepot.com—you can rest assured we'll be in business to support you. That's peace of mind.



TO SEE WHY OUR CARPET
IS CLEARLY BETTER, GO TO
homedepot.com/carpet

More saving. More doing.™



QUICK QUESTIONS TO GET YOU STARTED

There are a number of additional considerations that go into the carpet-buying process. If you spend a few moments thinking about the following simple questions, you'll be well on your way to selecting the perfect carpet.



1 HOW QUICKLY DO YOU NEED YOUR NEW CARPET?

Special order carpets may take up to two weeks to arrive. The Home Depot offers a number of options to accommodate customers who are on a tighter schedule.

Flexible timetable? You can choose from all our collections, starting on page 12.

No time to spare? Check out our Quick Installation options on page 16.



3 DO YOU HAVE CHILDREN AND/OR PETS?

Carpets with high stain resistance are recommended for homes with children or pets. Thanks to modern fiber technology, you don't have to sacrifice on style, comfort or value to enjoy maximum stain resistance.

For a list of our most stain resistant carpet choices, please see the chart on page 11.

2 WHERE IS THE CARPET GOING TO BE INSTALLED?

Family rooms, hallways and other spaces that see heavy traffic require carpet that's extremely durable. Bedrooms, dining rooms and other areas may not require the same level of durability.

For a list of our most durable carpet options, please see the chart on page 11.



4 WHAT DO YOU LIKE OR DISLIKE ABOUT YOUR OLD CARPET?

Are you looking for a new color or style? Would you like a choice that's environmentally friendly? Do you want a softer feel from your new carpet? How about a more casual or a more elegant look? Are you interested in a carpet that's constructed not to pill or shed?

Whatever you have in mind, we can help you find the ideal solution. Simply turn the page to start the process of selecting a new carpet you'll love.

SHOP ANY TIME, ANYWHERE



ONLINE



MOBILE



IN STORE



TO SEE WHY OUR CARPET IS CLEARLY BETTER, GO TO homedepot.com/carpet

More saving. More doing.™



IT'S ALL IN THE DETAILS

When you're shopping for carpet, take a good look at your fiber options and carpet types—selecting the appropriate fiber content and type of carpet will result in a floor that's comfortable, attractive and durable.

ABOUT CARPET FIBERS

There are five primary carpet fiber options. The benefits associated with each type of fiber are outlined below.

NYLON

Nylon is the most popular carpet fiber option. It is the strongest and most durable fiber available. Nylon is the best choice for high traffic areas.

POLYESTER

Polyester combines superior stain and fade resistance with vibrant coloration. Thanks to recent advances, several polyester styles are made using polyethylene terephthalate (P.E.T.), a fiber derived from recycled plastic bottles that's very soft to the touch.

TRIEXTA

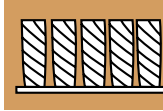
Triexta, found in our Platinum Plus® Collection, is a unique fiber type made with 39% corn sugars, a renewable resource. Carpet made with Triexta offers extreme softness and a high level of stain resistance.

OLEFIN

Olefin is the least expensive carpet fiber. In addition to being very stain resistant, olefin isn't affected by UV rays. It is often used for indoor/outdoor carpets.

WOOL

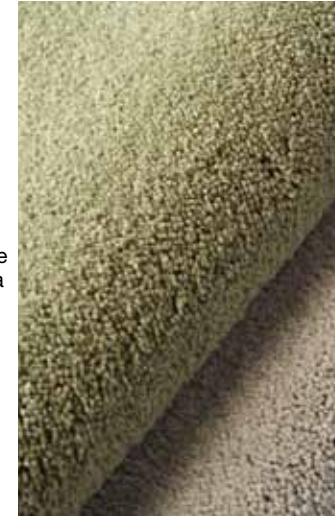
Wool is the premier carpet fiber. It offers excellent durability with a soft, luxurious feel. Wool carpets are only available at select The Home Depot stores.



TEXTURE

Texture carpet is a great choice for high traffic areas. The smooth surface of the pile gives the space a traditional look. Similar types include Saxony and cut pile.

Recommended for:
Main living areas
Hallways
Living rooms



TWIST

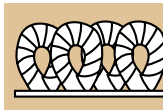
Twist, or frieze, carpet is casual and stylish, yet durable. These styles give rooms a modern and updated look.

Recommended for:
Bedrooms
Sitting rooms
Media rooms



THE 4 MAIN CARPET TYPES

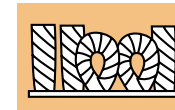
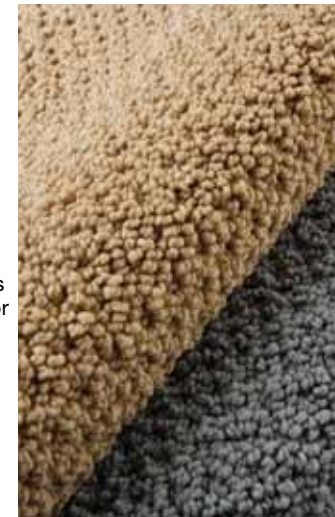
CHOOSE THE ONE THAT FITS YOUR DÉCOR AND LIFESTYLE



LOOP

Loop carpet—also known as Berber—provides maximum durability for high traffic areas. It makes the perfect answer for active rooms.

Recommended for:
Recreation rooms
Basements
Workout rooms



PATTERN

The distinctive looks of pattern carpets make a visual impact. Large-scale or small, their designs set any room apart. They are also referred to as cut and loop or "sculptured" carpets.

Recommended for:
Formal rooms
Dining rooms
Basements



SHOP
ANY TIME,
ANYWHERE



TO SEE WHY OUR CARPET
IS CLEARLY BETTER, GO TO
[homedepot.com/carpet](https://www.homedepot.com/carpet)

More saving. More doing.

SIMPLE CARPET SOLUTIONS

CHOOSE FROM A WIDE SELECTION OF CARPETS
DESIGNED TO FIT YOUR STYLE AND YOUR BUDGET

The Home Depot has made finding the right carpet easier than ever. When you visit our redesigned carpet department, you're sure to find the perfect carpet at our guaranteed* low price.



WHAT'S MOST IMPORTANT TO YOU? WHICH COLLECTIONS WILL WORK BEST?

We have grouped our exclusive carpet collections by features and benefits to help you easily determine the collection that is best for you.

| | PLATINUM PLUS COLLECTION | MARTHA LIVING STEWART | <i>Soft</i> COLLECTION | trafficMASTER |
|-----------|--|---|---|--|
| WARRANTY | Platinum Plus® Lifetime stain and soil, 25-year wear and texture warranties* | Lifetime stain and soil, 20-year wear and texture warranties* | Select, Deluxe and Premium warranties* available ranging from 5 to 15 years | A variety of warranty coverages available (10 years or less) |
| FIBER | Nylon and Triexta | Nylon | Polyester | Polyester, Olefin and Nylon |
| THICKNESS | Medium to High | Medium to High | Low to Medium | Low |
| PRICE | \$\$\$ | \$\$\$ | \$\$ | \$ |
| BENEFITS | Durability, stain resistance and wear warranties | Durability, stain resistance and designer sensibility | Broad selection at great value | Commercial applications available |

*, * See pages 23–24 for guarantee and warranty details. Martha Stewart Living™ and the Martha Stewart Circle Logo™ are trademarks of Martha Stewart Living Omnimedia, Inc. Copyright ©2011 Martha Stewart Living Omnimedia, Inc. All rights reserved.

SHOP
ANY TIME,
ANYWHERE



ONLINE

MOBILE

IN STORE



TO SEE WHY OUR CARPET
IS CLEARLY BETTER, GO TO
homedepot.com/carpet

More saving. More doing.™





PLATINUM PLUS
COLLECTION



MARTHA STEWART LIVING



Soft
COLLECTION



trafficMASTER

ONLY AT THE HOME DEPOT

TWO PREMIUM COLLECTIONS WITH LIFETIME STAIN WARRANTIES

HIGH PERFORMANCE, LOW PRICE

EXCLUSIVELY AT THE HOME DEPOT

PLATINUM PLUS® COLLECTION

Our exclusive Platinum Plus® carpet collection combines beautiful styles with our best warranties.

- Platinum Plus Warranty*—Lifetime stain and soil, 25-year wear and texture
- Manufactured with the best nylon and renewable Triexta fibers
- Features some of the softest, thickest carpets available

Key Benefits

Durability, stain resistance and wear warranties

MARTHA STEWART LIVING™

The Martha Stewart Living™ carpet collection is available in a wide range of styles and hundreds of colors, and it's only at The Home Depot.

- All Martha Stewart Living™ nylon carpets feature lifetime stain protection
- Enjoy unique designer styles that deliver outstanding durability, softness and advanced performance
- These stylishly affordable choices were handpicked to coordinate with Martha Stewart Living™ paint options

Key Benefits

Durability, stain resistance and designer sensibility

Martha Stewart Living™ and the Martha Stewart Circle Logo™ are trademarks of Martha Stewart Living Omnimedia, Inc. Copyright ©2011 Martha Stewart Living Omnimedia, Inc. All rights reserved.

SOFT COLLECTION

We've assembled a collection of polyester carpets in the latest texture, twist, loop and pattern styles.

- Select, Deluxe and Premium warranties* available ranging from 5 to 15 years
- Polyester carpets feature built-in stain resistance
- Our expanded collection includes carpets for every budget

Key Benefits

Broad selection at great value

*See pages 23 – 24 for warranty details.

TRAFFICMASTER™ COMMERCIAL & RESIDENTIAL PROPERTY

Our TrafficMaster™ collections allow you to find residential, commercial and outdoor carpet options in one place

- Most residential options meet Federal Housing Authority standards—look for the FHA logo on each display board
- Long-lasting commercial grade nylon and olefin fiber options are available
- Collection includes carpets with fade resistant UV-treated olefin for outdoor spaces

Key Benefits

Commercial applications available

SHOP ANY TIME, ANYWHERE



ONLINE MOBILE IN STORE

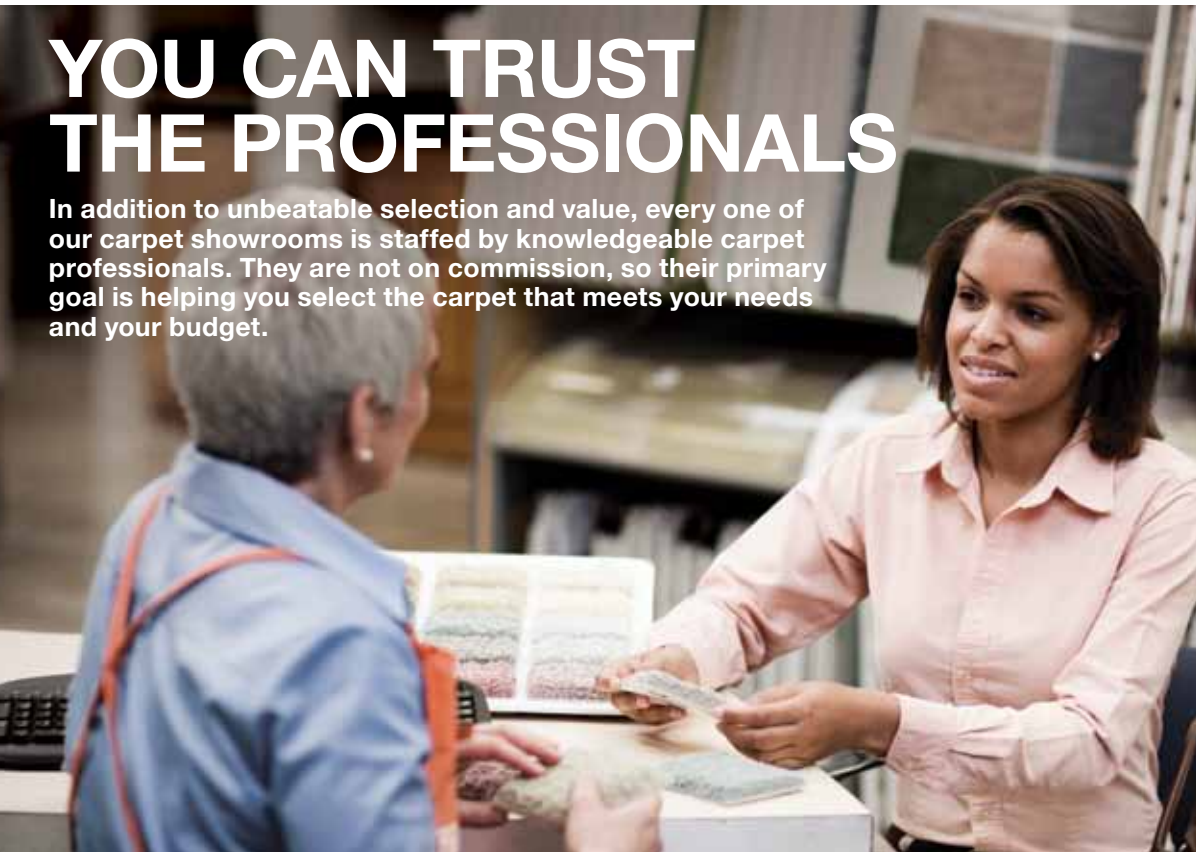
TO SEE WHY OUR CARPET IS CLEARLY BETTER, GO TO
homedepot.com/carpet

More saving. More doing.™



YOU CAN TRUST THE PROFESSIONALS

In addition to unbeatable selection and value, every one of our carpet showrooms is staffed by knowledgeable carpet professionals. They are not on commission, so their primary goal is helping you select the carpet that meets your needs and your budget.



STILL HAVE QUESTIONS? CHECK THE LABEL

You can find a wealth of information just by flipping over our carpet samples— every one of them has a helpful label on the back (see facing page for details).



UNDERSTANDING OUR WARRANTIES[‡]

Look for the highlighted box to determine the carpet's warranty level. The Home Depot offers Select, Deluxe, Premium and Platinum Plus warranties—coverage varies depending on your warranty level. Each warranty covers three component areas—abrasive wear, stain and soil, and texture retention. The Home Depot even offers a lifetime installation warranty^{‡‡} on all carpets professionally installed.

[‡], ^{‡‡} See pages 23–24 for warranty details. All warranties require professional carpet cleaning once per year.

SELECT WARRANTY

- 5 year abrasive wear warranty
- 5 year stain warranty

DELUXE WARRANTY

- 10 year abrasive wear warranty
- 5 year stain warranty
- 5 year texture retention warranty

PREMIUM WARRANTY

- 15 year abrasive wear warranty
- Limited lifetime stain warranty
- 7 year texture retention warranty

PLATINUM PLUS WARRANTY

- 25 year abrasive wear warranty
- Limited lifetime stain and soil warranty
- 25 year texture retention warranty

UNDERSTANDING OUR CARPET LABEL

All of our carpet labels are designed to make it simple for you to identify the fundamental aspects and features of every carpet we sell. You can use the carpet label to get a quick overview of each carpet or you can compare everything individually, from fiber content to warranty level.

FIBER What the carpet is made of (see page 8 to learn more)

FACE WEIGHT The weight of fiber (in ounces) per square yard of carpet (a higher number indicates greater density and thickness)

TWIST The number of times each fiber is twisted per linear inch (the higher this number, the better the durability and resiliency)

PLATINUM PLUS
COLLECTION

| | |
|---|---|
| Style: Fantasy 5456 Retail SKU: 232-296 Color: Hickory Blend 353 Fiber: 100% BCF 6,6 nylon | Width: 12' Pattern Repeat: N/A Face Weight: 48 oz. Twist: 6.50 |
|---|---|

| Warranty Levels | Performance Rating |
|---|------------------------------|
| Niveles de garantía | Clasificación de rendimiento |
| Platinum Plus* • 25 year abrasive wear warranty • Limited lifetime stain and soil warranty • 25 year texture retention warranty | |
| Premium* • 15 year abrasive wear warranty • Limited lifetime stain warranty • 7 year texture retention warranty | |
| Deluxe* • 10 year abrasive wear warranty • 5 year stain warranty • 5 year texture retention warranty | |
| Select* • 5 year abrasive wear warranty • 5 year stain warranty | |

Shielded by Scotchgard® Protector Technology.

MADE IN USA

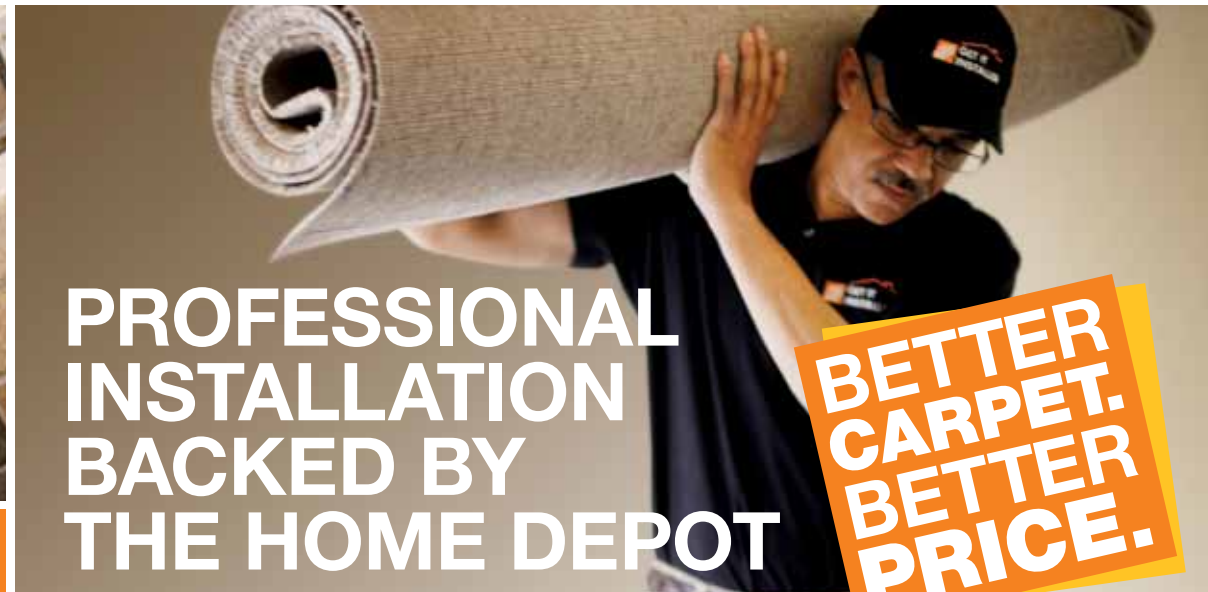
ABRASIVE WEAR
Covers against fiber loss from normal foot traffic/wear—affected areas will be replaced

STAIN AND SOIL
Covers against stains that can't be removed or color change—affected areas will be professionally cleaned or replaced. To learn how to protect your carpet from stains and spills, visit carpet-rug.org

TEXTURE RETENTION
Covers against loss of twist from normal foot traffic/wear—affected areas will be replaced

SHOP ANY TIME, ANYWHERE





QUICK SOLUTIONS

GET IT FAST

IN-STOCK CARPET

Get a great price on indoor and outdoor carpet that's guaranteed in stock and ready to take home today.

- Choose from a wide selection of indoor and outdoor styles
- The Home Depot is your one-stop shop – pick up your pad and tools with your carpet

Key Benefits
Get it today

72-HOUR INSTALLATION PROGRAM

With this installation program, you can have new carpet in your home just 72 hours after completing your measurement and payment.

- Choose from several popular carpet options – just look for the 72 Hour Installation display
- Reliable, professional installation
- Available in select stores

Key Benefits
Guaranteed installed in 72 hours

7-DAY INSTALLATION PROGRAM

These stylish options can be installed 7 business days after measurement and payment.

- Take your pick from over 20 unique carpets available in 150 colors, all conveniently grouped together on our Rapid Install display
- Available in select stores

Key Benefits
Broader assortment

PROFESSIONAL INSTALLATION BACKED BY OUR LIFETIME INSTALLATION WARRANTY**

The Home Depot stands behind all of the work provided by the independent flooring specialists within The Home Depot network. Our experts:

- Are fully licensed (where applicable)
- Are insured to The Home Depot standards
- Meet or exceed industry standards and certifications for flooring installation
- Have been selected by The Home Depot for their craftsmanship, reliability, timeliness and customer service
- Deliver quality services that are guaranteed by The Home Depot

** See pages 23–24 for warranty and installation details.

INSTALLATION SERVICES—WHAT TO EXPECT

The first step in the installation process is measurement. Thanks to the digital measurement pad—technology our competitors don't offer—your technician is sure to take accurate measurements of the areas to be carpeted.

Basic Installation includes the labor required to install the carpet in your home.

In some cases, additional charges may be applied for the following services:

- Removal and haul-away of existing flooring
- Moving furniture
- Installing on steps/stairs



SHOP
ANY TIME,
ANYWHERE



TO SEE WHY OUR CARPET IS CLEARLY BETTER, GO TO
homedepot.com/carpet

More saving. More doing.™

GET IT
INSTALLED™

THE
HOME
DEPOT

CHOOSE THE RIGHT CARPET PAD

Carpet pads make your flooring more comfortable underfoot, help your carpet last longer, reduce noise and provide insulation—keep in mind that specific pads are designed to help extend the life of certain types of carpet.



TRAFFICMASTER™ 8 LB.

- Hypoallergenic, designed for use in commercial and residential applications
- 8 lb. density
- 5/16" thickness
- 100% recycled bonded urethane—CRI Green Label approved
- Designed for loop and commercial carpets
- Includes a moisture barrier



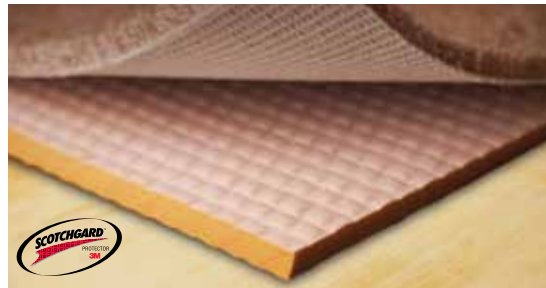
TRAFFICMASTER™ 6 LB.

- Hypoallergenic, designed for use in commercial and residential applications
- 6 lb. density
- 7/16" thickness
- 100% recycled bonded urethane—CRI Green Label approved
- Designed for texture, twist and pattern carpets
- Includes a moisture barrier



EXCLUSIVE STEP AHEAD™ WITH NIKE GRIND

- This carpet pad is exclusive to The Home Depot
- 8 lb. density
- 7/16" thickness
- Made with salvaged high-performance Nike athletic soft shoe scrap material
- Environmentally friendly 85% recycled content
- Includes moisture barrier
- Your purchase helps keep millions of pounds of scrap out of landfills



EXCLUSIVE SCOTCHGARD™

- The Home Depot is the exclusive carrier of this ScotchGard™ pad
- 1/2" thickness
- Durable foam makes your carpet better and last longer
- Insulating quality to help slow energy loss
- Moisture barrier
- Anti-microbial protection



HEALTHIER CHOICE

- Use with all carpet styles, this memory foam pad delivers comfort, provides maximum life for your carpet
- 10 lb. density
- 3/8" thickness
- 100% memory foam for enhanced comfort
- Environmentally friendly GREENGUARD Indoor Air Quality Certified® for the lowest VOC emissions
- Breathable moisture barrier
- Ultra-fresh anti-microbial protection

| CARPET PAD QUICK REFERENCE CHART | TRAFFICMASTER™ 8 LB. | TRAFFICMASTER™ 6 LB. | EXCLUSIVE STEP AHEAD™ WITH NIKE GRIND® | EXCLUSIVE SCOTCHGARD™ | HEALTHIER CHOICE |
|--|----------------------|----------------------|--|-----------------------|------------------|
| BEST FOR LOOP & COMMERCIAL CARPETS | ● | ○ | ● | ○ | ● |
| BEST FOR TEXTURE, TWIST & PATTERN CARPET | ○ | ● | ● | ● | ● |
| LIFETIME WARRANTY | ○ | ○ | ● | ● | ● |
| ANTI-MICROBIAL | ○ | ○ | ○ | ● | ● |
| APPROVED FOR RADIANT-HEAT FLOORING | ○ | ○ | ○ | ○ | ● |
| DOUBLES THE TEXTURE RETENTION WARRANTY | ○ | ○ | ○ | ○ | ● |

SHOP ANY TIME, ANYWHERE



TO SEE WHY OUR CARPET IS CLEARLY BETTER, GO TO homedepot.com/carpet

More saving. More doing.

BIG PROJECTS, SMALL PAYMENTS

- 6 months no interest, no payment purchasing window*
- Annual Percentage Rates start as low as 7.99%
- Fixed monthly payments



| LOAN AMOUNT | 84 MONTHLY PAYMENTS |
|-------------|---------------------|
| \$1,000 | \$19.00 |
| \$1,500 | \$29.00 |
| \$2,000 | \$38.00 |
| \$2,500 | \$47.00 |
| \$3,000 | \$57.00 |
| \$3,500 | \$66.00 |
| \$4,000 | \$75.00 |
| \$4,500 | \$85.00 |
| \$5,000 | \$94.00 |

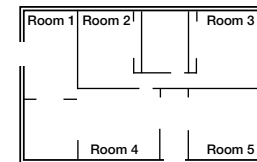
Quoted monthly payments assume an 84-month term at 13.99% Annual Percentage Rate. See Associate for details.

*Purchase window begins at approval.

SHOP ANY TIME, ANYWHERE



PROJECT ESTIMATE WORKSHEET



To get a preliminary estimate of your project's total cost, simply complete this worksheet.

MEASURE and record the square footage of the room(s) you wish to carpet (including closets).

Room 1 _____ Length x _____ Width = _____ Sq. Ft.

Room 3 _____ Length x _____ Width = _____ Sq. Ft.

Room 2 _____ Length x _____ Width = _____ Sq. Ft.

Room 4 _____ Length x _____ Width = _____ Sq. Ft.

FILL IN the prices of your top two carpet choices and calculate a rough estimate to compare the price of each job.

Subtotal = _____ Sq. Ft.

Add up to 10% additional for Installation = _____ Sq. Ft.

Total Job = _____ Sq. Ft.

OPTION 1

| PRODUCT/LABOR | YOUR UNIT PRICE | X | YOUR SQ. FT. JOB | = | YOUR JOB TOTALS |
|---|-----------------|---|------------------|---|-----------------|
| Carpet/Sq. Ft. | _____ | x | _____ | = | _____ |
| Carpet Pad/Sq. Ft. | _____ | x | _____ | = | _____ |
| Basic Install – Whole House | | | | = | _____ |
| Subtotal = (Carpet and Pad with Basic Install) | | | | = | _____ |
| Additional Services (does not apply to all jobs)*** = Subtotal x 20% | | | | = | _____ |
| Total Job (Carpet and Pad with Basic Install and Carpet Maintenance Plan) | | | | = | _____ |

OPTION 2

| PRODUCT/LABOR | YOUR UNIT PRICE | X | YOUR SQ. FT. JOB | = | YOUR JOB TOTALS |
|---|-----------------|---|------------------|---|-----------------|
| Carpet/Sq. Ft. | _____ | x | _____ | = | _____ |
| Carpet Pad/Sq. Ft. | _____ | x | _____ | = | _____ |
| Basic Install – Whole House | | | | = | _____ |
| Subtotal = (Carpet and Pad with Basic Install) | | | | = | _____ |
| Additional Services (does not apply to all jobs)*** = Subtotal x 20% | | | | = | _____ |
| Total Job (Carpet and Pad with Basic Install and Carpet Maintenance Plan) | | | | = | _____ |

Please note that this worksheet is only a guide. Your Associate will give you an accurate price quote following your professional in-home measurement, which may include extra carpet required to ensure a proper fit.

***Depending on your home layout, some of the following charges may apply: removal and haul away of old flooring, moving furniture, steps. See Associate for details.

TO SEE WHY OUR CARPET IS CLEARLY BETTER, GO TO homedepot.com/carpet

More saving. More doing.

GET READY.

INSTALLATION CHECKLIST

On the day of your installation, plan accordingly—installation usually takes a day or less, but you won't be able to use the room(s) where it's being installed for a period of time. With that in mind, reading over and filling out the items on this checklist will help everything go smoothly.

BEFORE INSTALLATION BEGINS, BE SURE THAT:

- Electricity and water are directly available in the work area
- The installation area's vents are covered to contain any dust or debris
- There's a clear path for easy access to the installation area and for debris removal
- Furniture and floors are covered as needed
- All breakables and electronic equipment have been removed and/or disconnected
- Furniture has been removed from the room(s) receiving the new carpet. If you prefer, The Home Depot can move furniture for you. Ask your sales Associate for more information

DURING THE INSTALLATION

On installation day, our licensed, insured installers will be on time, courteous and efficient. They'll have the equipment they need, and they'll be ready to install your new carpet. You won't need to provide any tools or materials. All we ask is that you:

- Have an adult with the authority to make installation decisions available
- Keep children and pets away from the installation area

That's it! We'll take care of the rest. When the installation process is complete, our team will:

- Vacuum and clean the installation site
- Remove all installation-related debris
- Conduct a final inspection of your new carpet for your approval

AFTER THE INSTALLATION

- Change your air filters
- Make sure all doors work properly—substantially thicker carpet may result in doors no longer swinging freely
- Carefully move furniture and other items back into the room(s)
- Put appropriate protectors on the feet of chairs, tables and other furniture to avoid damaging your carpet
- Immediately begin proper care and maintenance. See pages 21 – 22 for warranty details. All warranties require professional carpet cleaning once per year.



WARRANTY DETAILS

CARPET CARE**

1. Vacuum frequently—minimum of two times per week.
2. Clean spills promptly. Immediately scoop up as much of the spill as possible. Then blot—do not rub—area with a white cloth and warm water. Always work from outer edge of stain or spill toward center to avoid spreading.
3. Professional cleaning once every 18 months is required for coverage of limited warranties. Carpet cleaning technician uses a hot water extraction cleaning method. The Home Depot recommends professional cleaning once every 12 months to keep your carpet looking its best.

LIMITED STAIN AND SOIL WARRANTY *During the applicable warranty period, if the surface pile of your carpet becomes stained and the stain cannot be removed using procedures recommended in this brochure, a The Home Depot Associate will coordinate service for qualified stains (subject to limitations listed). This warranty also covers noticeable color change in surface pile of carpet due to the accumulation of dry soil as a result of foot traffic from normal, indoor household use which cannot be corrected. Noticeable color change is defined as a change less than 3 using standardized rating scales (AATCC Evaluation Procedure 1 Grey Scale for color). If covered stains or soil discoloration cannot be removed, The Home Depot will coordinate replacement for the affected area only with identical carpet, or carpet of comparable value. Stain and soil warranty service is limited to stains caused by most common foods and beverages, and color changes due to deposits of dry soil as a result of foot traffic from normal indoor household use, which cannot be corrected. No carpet is fully stain-proof. Therefore, neither The Home Depot nor its carpet manufacturers extend warranty coverage to any of the substances or causes of damage identified below:

- Non-food and non-beverage substances including, but not limited to: cosmetics, bleaches, inks, etc.
- Foods and beverages that contain strongly colored natural dyes as found in but not limited to: mustard, coffee, herbal tea, curry powder, turmeric, etc.
- Substances that destroy or change color of carpets, including but not limited to: stains caused by dyes, bleaches, acne medications, drain cleaners, plant foods, etc.
- Pet or human stains such as vomit, blood, urine, feces, etc.
- Foot traffic deposits from grease, asphalt, tar, soot, cement; appearance or color changes on stairs or damage due to burns, tears, cuts, pulls, shading or pile reversal, furniture depressions or damage done by athletic equipment.

The Home Depot offers a Carpet Maintenance Plan which includes one professional cleaning every 12 months to help keep your carpet looking beautiful and meets the minimum requirement for warranty coverage.

LIMITED WEAR WARRANTY *During the applicable warranty period, your The Home Depot carpet will not incur fiber loss from abrasive wear by more than 10% in any area. "Fiber loss from abrasive wear" is defined as actual loss of fiber, due to abrasion, from the surface pile of the carpet and does not include damages caused by, or resulting in, tears, pulls, cuts, pilling, shedding, burns, pets, fuzzing, matting, crushing, pile reversal, fading, improper cleaning, improper installation, or defective construction. Damage caused by improper cleaning methods and materials is also excluded. Fiber loss is determined by comparison to non-traffic areas. If your carpet is determined to have lost 10% or more of its fiber due to abrasive wear, The Home Depot will coordinate replacement of the affected area only (area extending to the nearest wall, doorway, or entrance) with carpet of comparable value. Carpets installed outdoors, on stairs, in bathrooms, kitchens, or in areas subject to other than normal foot traffic are not covered by this warranty. Face Weight is the number of ounces of fiber in a square yard of carpet. Face weight is measured as tufted pile yarn weight according to the ASTM (American Society for Testing Materials) method D-418. Due to several processes involved in manufacturing, such as shearing, the actual finished face weight may reflect a variance of up to 7%. The weight is determined, compensating for the factor of commercial moisture regain, as defined in ASTM D-1909. The ASTM measurements are accepted industry norms and the most accurate means of determining face weight.

Style _____ Color _____ Manufacturer _____ Date Purchased _____

Warranty Level Select Deluxe Premium Platinum Plus

LIMITED TEXTURE RETENTION WARRANTY *During the applicable period of your warranty, the surface pile of your The Home Depot carpet, when installed over The Home Depot recommended carpet cushion, and under ordinary foot traffic, will retain its texture without tufts losing twist, bursting, blooming, or opening. Texture retention is the ability of carpet tufts to retain their visible shape, and not burst, bloom, open, or lose twist, and is measured by using an international standardized rating scale ranging from 5 (new or no change) to 1.0 (severe change). If your The Home Depot carpet fails to maintain a texture retention rating of at least 3.0 for the specified warranty period, The Home Depot will coordinate replacement with a carpet of comparable value for the affected area only (area extending to the nearest wall, doorway, or entrance). Carpets installed outdoors, on stairs, in bathrooms, kitchens, or in areas subject to other than normal foot traffic, under athletic equipment, or depressions caused by furniture are not covered by this warranty.

SHOP
ANY TIME,
ANYWHERE



TO SEE WHY OUR CARPET
IS CLEARLY BETTER, GO TO
homedepot.com/carpet

More saving. More doing.

WARRANTY DETAILS

CUSTOMER SATISFACTION REPLACEMENT The Home Depot offers customers a 90 Day Satisfaction Replacement Guarantee for carpet purchases. If you are not satisfied with your new carpet, for any reason, please contact your local The Home Depot store and one of our store Associates will coordinate the replacement of the carpet for another style or color of equal value in accordance with this warranty. Customers have the option of replacing the purchased carpet for carpet of either greater or lesser value. If you choose to replace your purchased carpet with a carpet selection of greater value you will be responsible for the difference in price. If you replace your purchased carpet with a carpet selection of a lesser value no monetary compensation or reimbursement will be paid.

LIMITATIONS The Home Depot's 90 Day Satisfaction Replacement Guarantee will not apply to carpet that has been glued down, vandalized, altered, damaged by smoke or fire, flood, lightning, wind, or subject to any abuse, or any disaster is not covered under The Home Depot's 90 Day Satisfaction Replacement Guarantee. Additionally, this Guarantee does not apply to conditions covered by any retail manufacturer warranty. This 90 Day Satisfaction Replacement Guarantee is limited to a one-time replacement and is limited to the replacement of the carpet only. This Guarantee does not include pad or costs associated with the delivery or installation of the replacement carpet. Ask an Associate for more details.

RECEIVING REPLACEMENT CARPET Please contact The Home Depot store where the original carpet was purchased to initiate the process of receiving a carpet replacement. If you have any further questions about the 90 Day Satisfaction Replacement Guarantee, please see a store Associate for details.

THE HOME DEPOT LIMITED EXTENDED WARRANTIES GENERAL TERMS AND CONDITIONS All limited warranties only apply to carpet purchased from The Home Depot and installed in owner-occupied residences where no commercial activity, including rental or day care, takes place. These warranties exclude carpet which has been put in commercial use, abnormal use or conditions, any type of abuse, vandalism, or damage by smoke, fire, storm, flood, hurricane, wind, lightning or any natural disaster. Any repair or replacement under these limited warranties will be coordinated by The Home Depot and will be limited to the affected area only and adjacent areas extending to the nearest wall, doorway, or entrance. To qualify for warranty coverage, all carpet purchased from The Home Depot must be installed over carpet cushion which meets the HUD UM 729, Class 2 standards. These HUD standards set minimum standards for carpet cushion for density (lb./ft.), thickness (in.), weight (oz./sq. yd.) and other physical characteristics which determine performance. These limited warranties are conditioned upon your compliance of recommended carpet care and cleaning procedures and are voided if not followed.

CARPET INSTALLATION Pricing only applies to basic installation labor for carpet and pad from The Home Depot in single-family residential homes for one or more rooms. Basic installation labor does not include custom or optional labor such as moving furniture, removing and hauling away existing flooring and installing flooring on steps. Multi-family and commercial jobs will be done by quote only. Offer not valid on glue down carpet installations. Offer available in all U.S. The Home Depot stores.

TOTAL LOWEST PROJECT PRICE – GUARANTEED *We'll beat any comparable product + installation quote by 10%—no one takes you from selection to installation for less.

90-DAY CARPET SATISFACTION GUARANTEE ♦♦Replacement carpet only of equal or lesser value. Does not include labor. See contract for guarantee details.

LIFETIME INSTALLATION WARRANTY **To the extent permissible under applicable law, The Home Depot warrants the workmanship of the carpet installation for the lifetime of the carpet. The limited warranty covers all seams, restretches and stairwork. The Home Depot's warranty applies only to installation labor and is not transferable. The warranty applies to single-family homes used solely for residential purposes. For the warranty to be valid, the customer must have the receipt of purchase. The Home Depot's warranty does not cover damage caused by Acts of God, installation or repairs made by persons other than The Home Depot or authorized service provider, abuse, misuse, neglect, or normal wear and tear. The warranty is void if flooring is subject to improper maintenance, improper cleaning methods, abuse, excessive moisture or structural alterations. Merchandise and materials are covered exclusively by the manufacturer's warranty, if any. This limited warranty gives customer specific legal rights and customer may also have other rights that may vary from state to state.

We reserve the right to limit quantities to the amount reasonable for our regular customers. In the event of an error, we will make every reasonable effort to accommodate our customer. Details on any product warranty available at store. ©2011 Homer TLC, Inc. All rights reserved.

SHOP
ANY TIME,
ANYWHERE



 PLEASE RECYCLE Paper content is
80% recycled fiber.